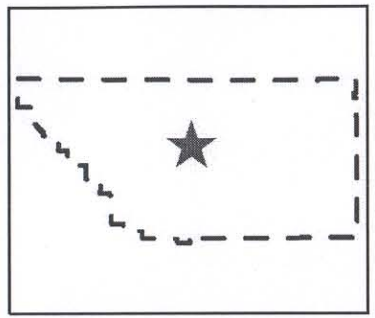
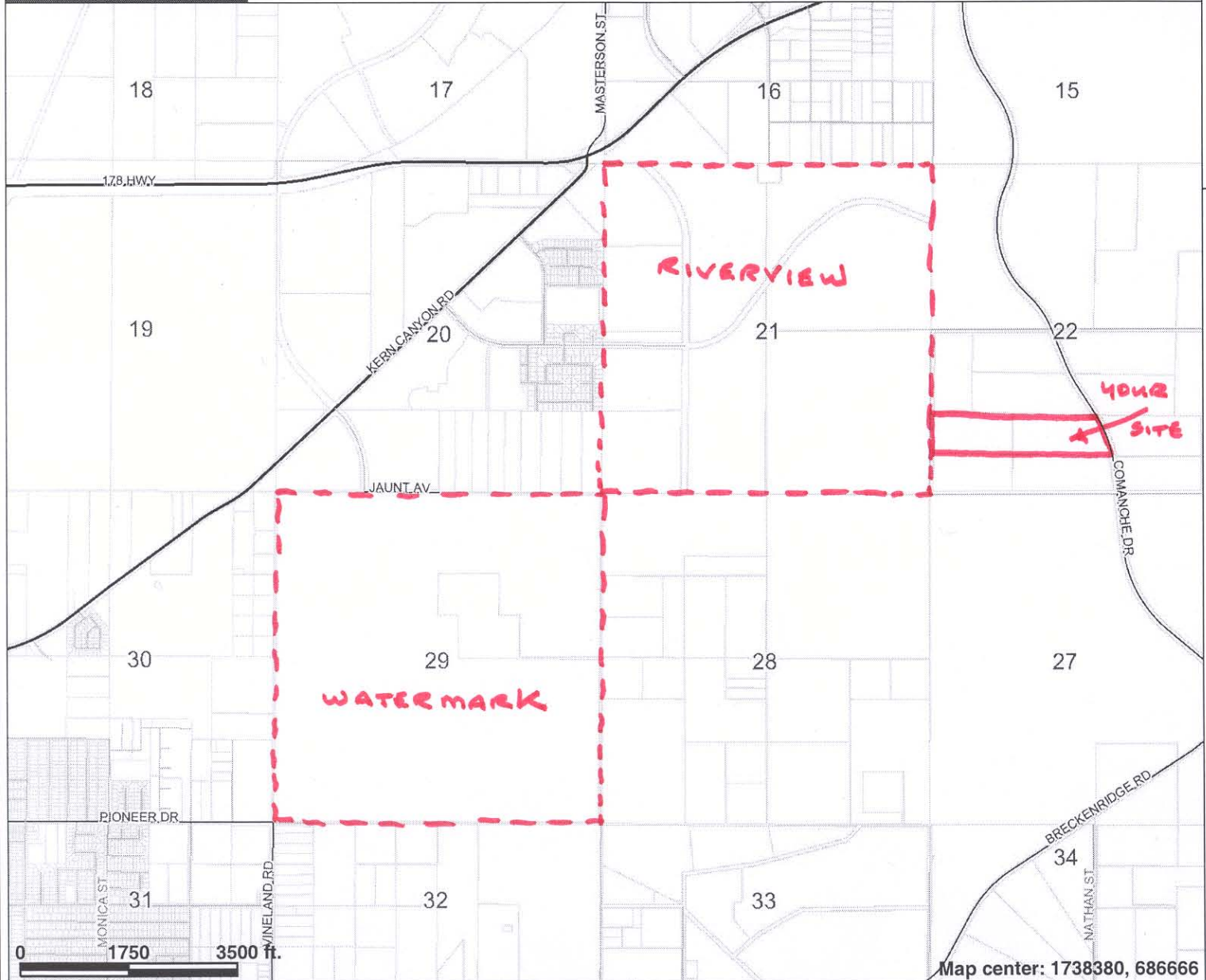


Section 21 and Section 29



Legend

Roads

- Arterial
- Collector
- Highway
- Local
- Ramp
- Unpaved

- County of Kern
- Assessment Parcels
- Sections

Map center: 1738380, 686666

Scale: 1:29,397

This map is a user generated static output from an Internet mapping site and is for general reference only. Data layers that appear on this map may or may not be accurate, current, or otherwise reliable. THIS MAP IS NOT TO BE USED FOR NAVIGATION.

Notes: Section 21 - Riverview
Section 29 - Watermark